



Dalet News Suite 2.0

Quick Guide Autocue Teleprompter
Dalet Site6 Autocue Integration

OCTOBER 2008

**Quick Guide Autocue Teleprompter
Revision History**

July 2007	Document version 1 for Dalet 1.5
Oct. 2008	General Revision

Copyright (c) 1992-2008
Dalet Digital Media Systems
All rights reserved.

Printed in France.

All products other than those developed by Dalet Digital Media Systems that are mentioned in this document are registered trademarks of their respective companies.

If this document is distributed with software that includes an end user agreement, this document, as well as the software described in it, is furnished under license and may be used or copied only in accordance with the terms of such license. Except as permitted by any such license, no part of this document may be reproduced, stored in a retrieval system, or transmitted, in any form or by any means, electronic, mechanical, recording, or otherwise, without the prior written permission of Dalet. Please note that the content in this document is protected under copyright law even if it is not distributed with software that includes an end user license agreement.

The content of this document is furnished for informational use only, is subject to change without notice, and should not be construed as a commitment by Dalet.

This document can also be used for earlier builds of Dalet. In some cases, screen-shots may differ or some functions may not be available.

Dalet assumes no responsibility or liability for any errors or inaccuracies that may appear in the informational content contained in this guide.

The goal of this document is to provide you with a clear step by step set of instructions to use the software modules produced by Dalet. If you find an error or require further information, please contact Dalet.

You can access updates and newer documents from Dalet's online library on the Dalet website. You need to have a registered name and password to access these documents. If you do not have an account, please contact your Dalet representative or send your request to support@dalet.com.

www.dalet.com



STEP 1: INSTALLATION OF THE SOFTWARE 5
STEP 2: DALET SIDE 5
STEP 3: AUTOCUE SIDE 7
ADDITIONAL SETTINGS IN SCREENSHOTS 10



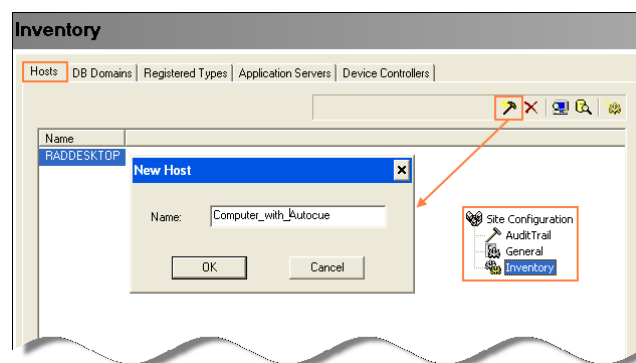
Step 1: Installation of the Software

In order to be able to create an instance of the Autocue device instance on the Dalet side, make sure that:

Exchange and Distribution setup has been run, with the option **Integration Gateway** checked, on the computer(s) which will host the MOS server. You have to end all Dalet applications, including Dalet Service, as well as the name server in order to run this setup.

Install the Autocue software.

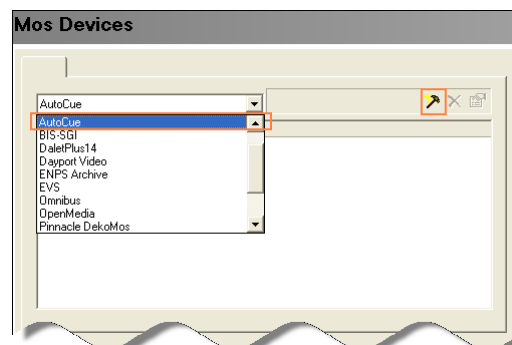
The computer running the Autocue software has to be registered as a host in the Dalet site.



Step 2: Dalet Side



Open the **MOS Admin** → **MOS Device** branch of the Admin module and create an instance of the Autocue teleprompter.

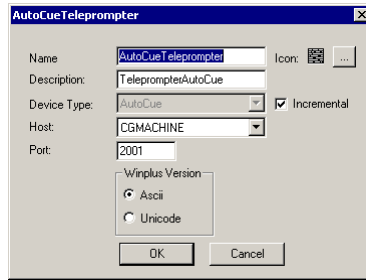


Fill in a name for the device instance (and a description). Make sure you select the computer of the Autocue as a host.

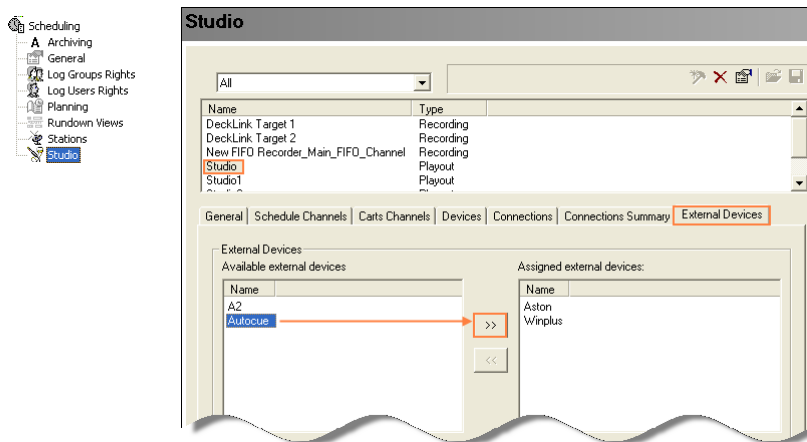
The port number has to match the settings on the Autocue-side (2001 by default).

Enable the **Incremental** checkbox, otherwise the teleprompter, once loaded will not automatically update when changes are made to the rundown/story content.

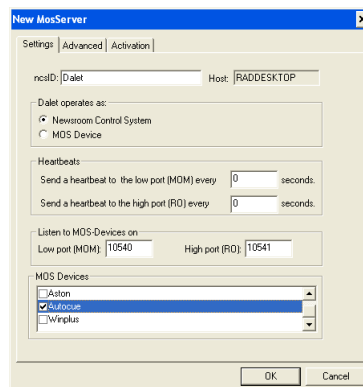
Make sure you select **ASCII**, since Autocue does not support UTF 16.



Open **Scheduling** **Studio**¹. Mark the target studio for which to use the teleprompter. Open the external devices tab. Assign the device instance to the Assigned devices list.



Open **Site Configuration** **Inventory** **Application Server** tab. Create an instance of the MOS server² and for this server, check the box next to the Autocue entry.



¹ Dalet 1.4 sites go to **Broadcast Platform** **Studio**

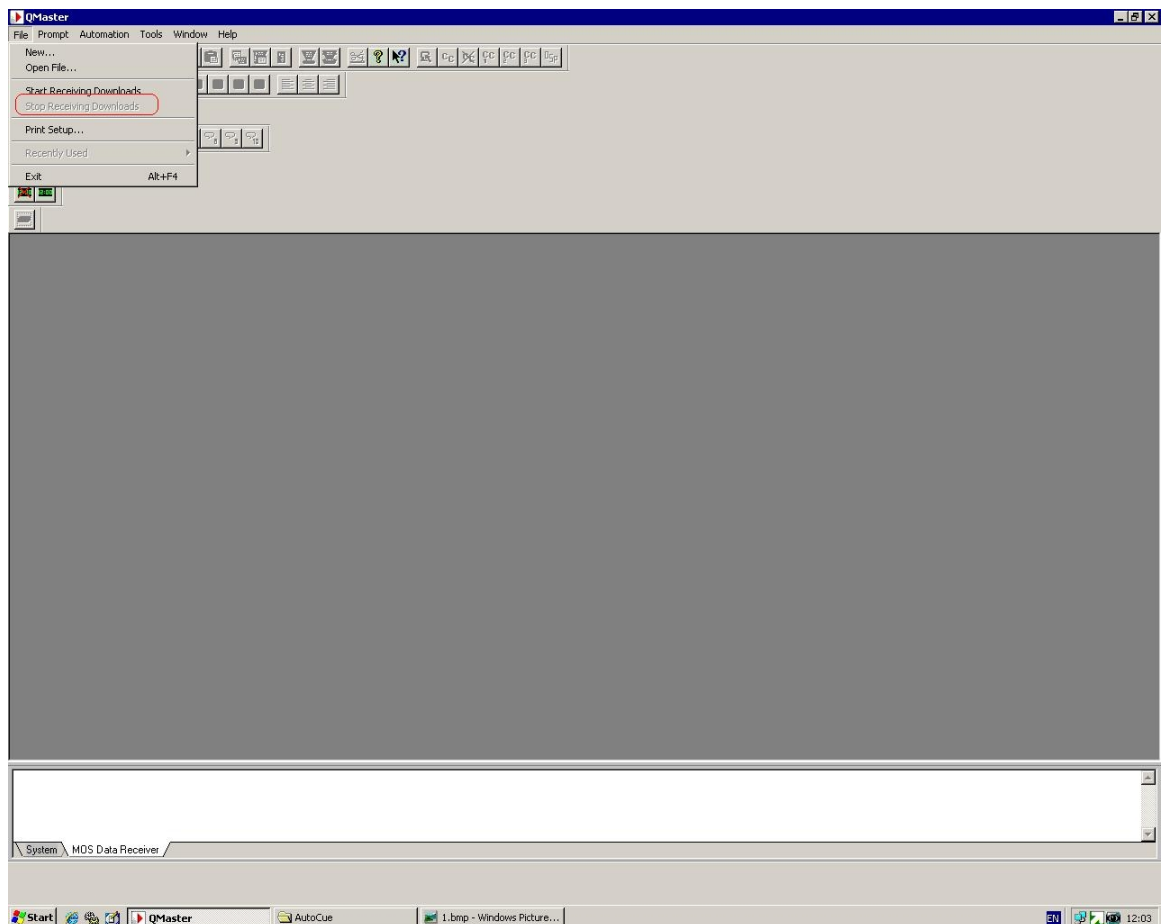
² If the MOS Server is not listed, you have to enable its use **Site Configuration** **Registered Types [Application Servers]**. You enable a server by selecting **Use in Site** from the contextual menu.

Step 3: Autocue Side QMaster

After having installed the Autocue software QMaster, place the **Nexus Download Profile** file into the **ADR profiles** folder which is located in **\...\AutoCue\ Configuration**.

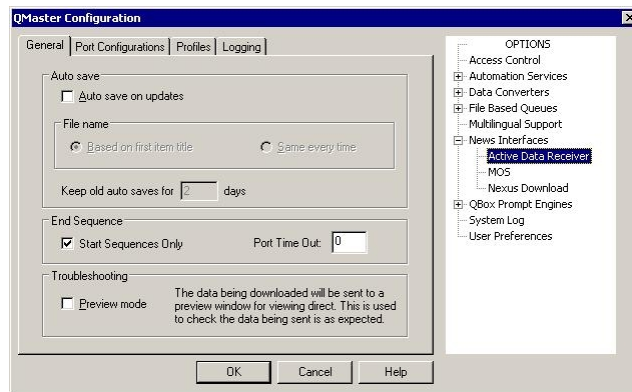
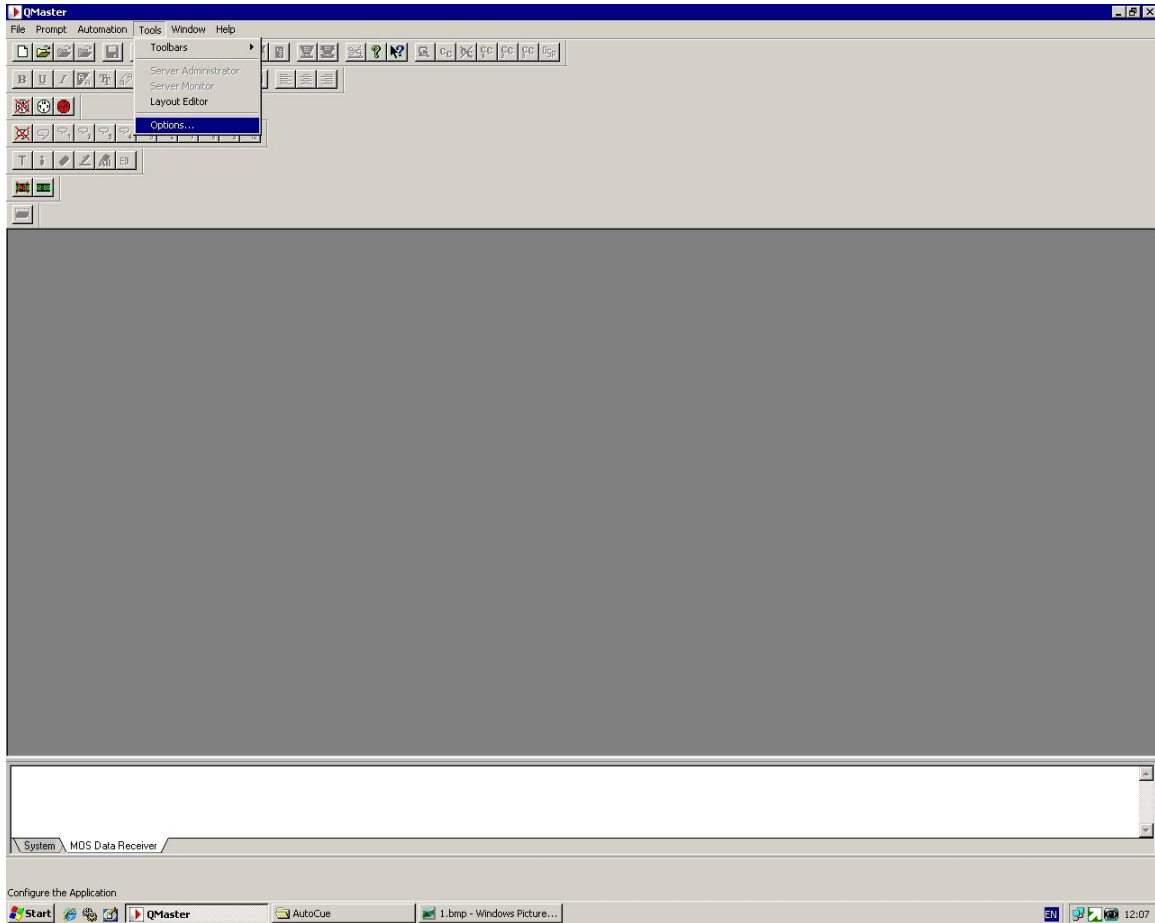
Make sure that you have licensed your software for **"Active Data Receiver"**.

Run the application and disable in the **File** menu **"Stop Receiving Downloads"**.

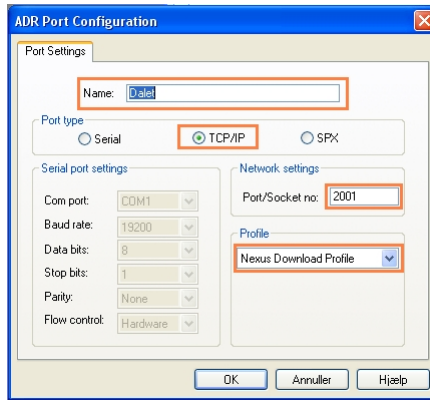


Open the Autocue configuration and open **News Interfaces** → **Active Data Receiver**.

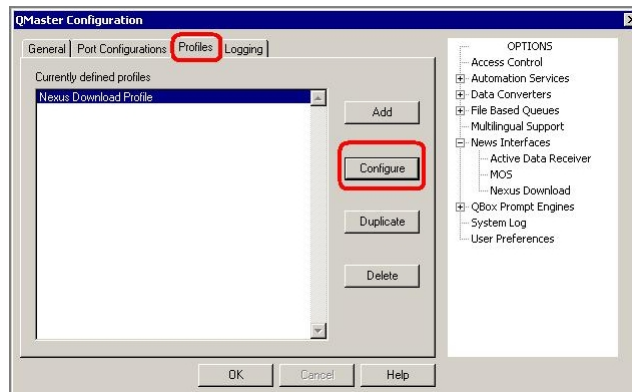
In the **General** tab, enable **Start Sequences Only**.



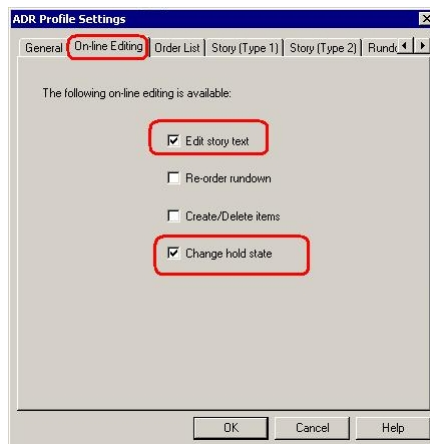
In the Port Configuration tab, click **Add** and in the pop-up window, fill in the info according to the screenshot: Name: **Dalet**, Protocol: **TCP/IP**, Port **2001**, and Profile: **Nexus Download Profile**.



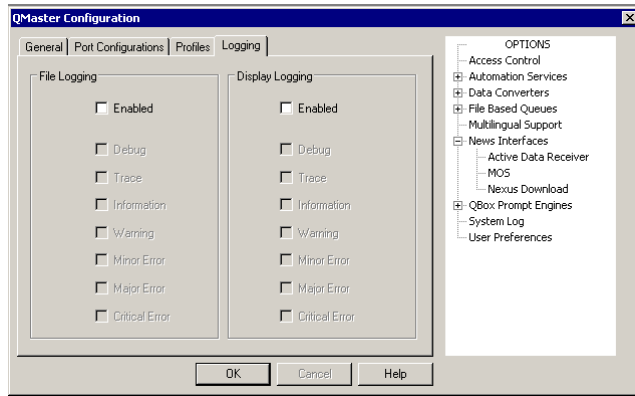
In the Profiles tab, Nexus should be selected, from the Add button.



Go to online editing Check the first and the last box while leaving all others unchecked.



In the Logging tab, there should not be any checked boxes. Go to online editing



To enable interaction with Dalet, enable **Start Receiving Downloads** in the File menu.

Additional Settings in Screenshots

