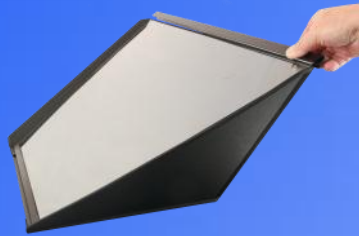


1. Detach the upper glass retainer by removing the thumbscrews at either end.



2. With the blue dot in the corner of the glass facing you, place the shorter edge of the glass into the lower glass retainer in the bottom of the hood.



3. Re-attach the upper glass retainer, placing it on the top of the hood to hold the glass securely in place and re-attach with the thumbscrews.



4. Carefully stretch the elasticated end of the fabric light excluder around the four posts on the rear of the metal frame.



Light excluder fitted



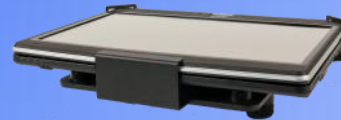
## Display Compatibility



PSP 12" and  
17" Monitor



iPad Display



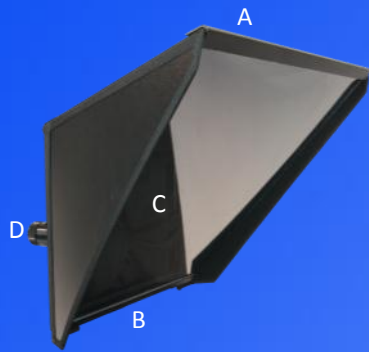
Tablet PC  
Display

For more compatible  
monitors see our website.

# Professional Series Hood Medium Wide Angle Guide



# Components



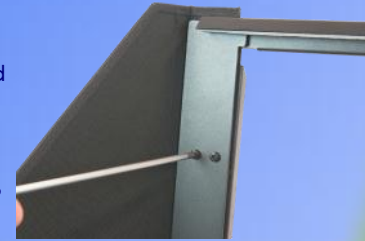
A	Upper glass retainer
B	Lower glass retainer
C	Glass
D	Tube clamp



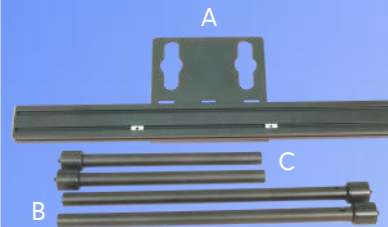
3. Align the tube clamp with the two holes in the back plate of the hood.

4. From the inside of the hood, insert two screws and tighten to secure the tube clamp in position.

*Repeat for the second tube clamp.*

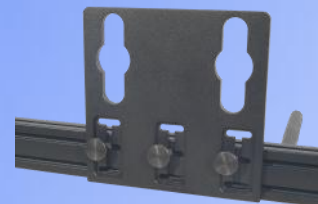


# Bracket Set Assembly



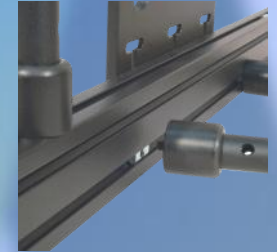
A	Keyhole Plate
B	Hood Poles
C	Monitor Poles

1. Ensure the keyhole plate is in the appropriate position on the bracket.



2. Screw in the vertical hood mounting bars.

3. Screw in the horizontal monitor mounting bars.



Completed bracket

# Hood Assembly



1. Fold back the sides of the hood and loosen the four studs on the metal frame. Insert the side panels between the front and back sections of the metal frame. Ensure that they are pushed in completely.

2. Re-tighten the four studs to secure the frame and clamp each side in position. On the back of the metal frame, halfway down each side, there is a large hole adjacent to a small recess. In one end of each tube clamp is a thumbscrew and a small metal locating pin.



Align the hood mounting bars with the clamps on the rear of the hood, pass the tubes through the clamps and tighten using the knobs.