

# WinCue Pro News AP ENPS

## Version 1.3

### User Guide



## About this guide

The WinCue prompting solution has been designed for general production and prompting; its features include Runorder management, simultaneous prompt and edit, and script timings calculation. WinCue can also be used to connect to networked newsroom systems, by doing this WinCue is able to open scripts from the newsroom system and then prompt them. This user guide has been produced to explain to you how to set-up and use WinCue Pro News with the AP ENPS newsroom system.

## Audience

This guide is for all users of the WinCue Pro News AP ENPS prompting software. From complete WinCue novices to experts, this guide should be useful to all, providing a quick reference for experts and step-by-step help for novices. The pre-requisites to using this guide is that you should be familiar with the Microsoft® Windows environment, in particular that of Microsoft® Word and that you are.

# Contents

About this guide .....	2
Audience .....	2
<b>1 Set-up</b>	
1.1 WinCue Pro News Requirements .....	5
1.2 AP ENPS Requirements .....	6
1.3 Network Settings .....	6
<b>2 Configuration</b>	
2.1 WinCue Configuration .....	10
2.1.1 Further Settings .....	11
2.1.1.1 Other Settings .....	11
2.1.1.2 Presenter Settings .....	13
2.1.1.3 Presenters .....	13
2.1.1.4 Banner .....	13
2.1.1.5 Logging .....	13
2.2 AP ENPS Configuration .....	14
<b>3 AP ENPS Scripts in WinCue</b>	
3.1 Opening AP ENPS scripts .....	17
3.1.1 The Queue Browser .....	17
3.1.2 Deleting an old ENPS Runorder from WinCuePro .....	18
3.2 Panic Mode .....	19
3.2.1 Enabling/Disabling Panic Mode .....	20
3.3 Trouble Shooting .....	20
<b>4 Technical Support</b>	
4.1 Technical Support .....	23

# 1 Set-up

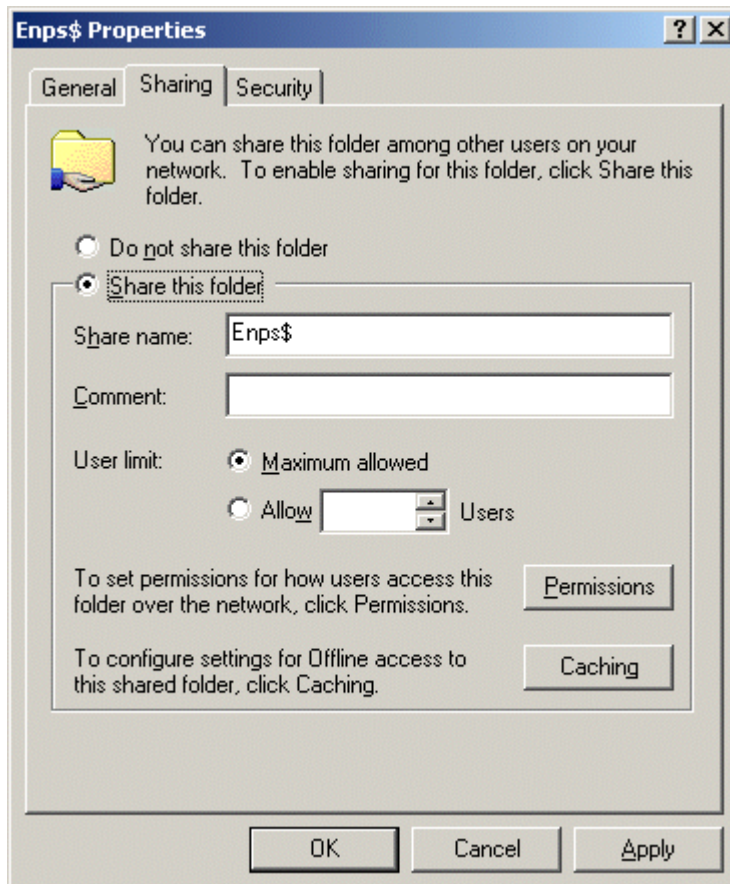
---

## 1.1 WinCue Pro News Requirements

The WinCue prompter machine should have the same hardware specifications as stated in the WinCue Pro News User Guide that was supplied with your WinCue package. The machine should also have a network card installed and your WinCue license should have the ENPS news interface enabled.

A network protocol has to be installed on the PC; this will depend on what your ENPS network is using, e.g. – the TCP/IP protocol installed and the machine setup with an IP address.

You will also have to create an 'enps\$' folder on the WinCue machine's hard-drive – this is where all received Runorders (from ENPS) are placed. Make sure that you set the folder properties to share.



---

**Note: Windows NT4/2000 users will have to be logged on as administrators to make these changes and Windows NT4 users may have to re-apply the Windows NT4 Service Pack if you still cannot see these options.**

---

## 1.2 AP ENPS Requirements

The AP ENPS machine that will send Runorders to the WinCue must, obviously, have ENPS installed on it, if it does not consult your I.T. department. The enps.ini file, which can be found in the ENPS program folder, must include an instruction for where it should send the Runorder scripts to, the ENPS folder on the WinCue machine file path, for example: `path="\\Liquid_tc0/Enps$"`

---

**Note: Any ENPS machine can send Runorder scripts to the WinCue prompter machine as long as the enps.ini file has been modified to do this.**

---

## 1.3 Network Settings

Before you can use WinCue to open and prompt ENPS files it is essential that both machines (the ENPS machine and the WinCue machine) can see each other, this section deals with setting up a network connection between them both. It may be necessary for you to contact your I.T. department to find out more about how your internal network is configured.

---

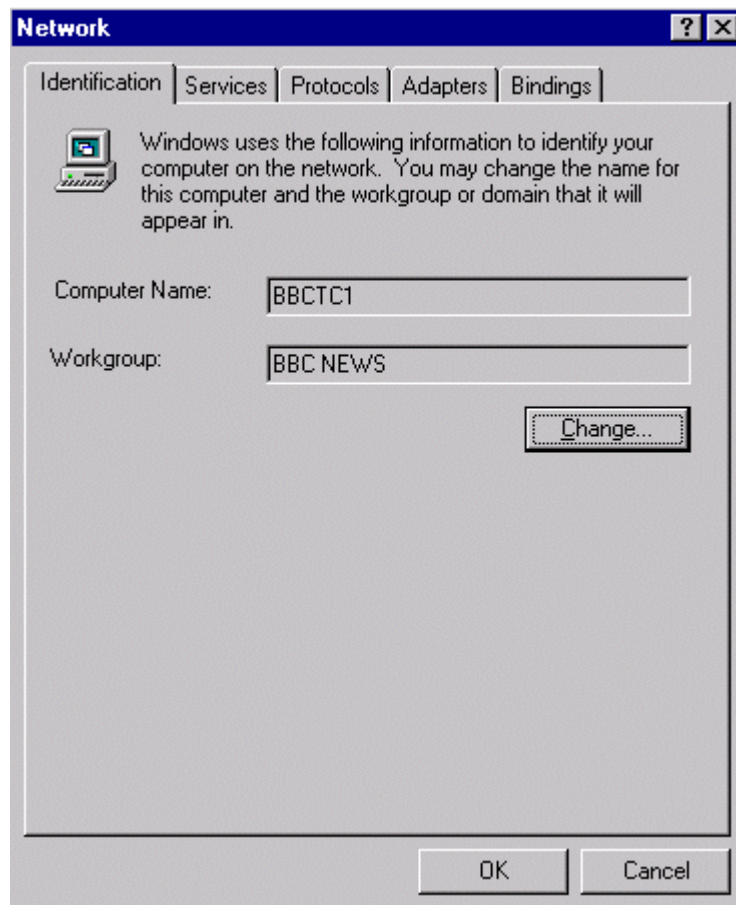
**Note: Make sure that you have installed the appropriate drivers for the network cards that are used by your WinCue prompter machine and ENPS machine.**

---

To set-up your WinCue prompter so that it can be seen by the ENPS machine you will have to give your WinCue prompter a Host Name and add it to the Workgroup that you will be connected to. Right click on Network Neighborhood



and select Properties to view or change your network settings, if you have Windows 2000 then the network settings are accessed from the Systems Properties menu.



Now you need the Physical Address of your network card, to find this information click on the windows START button and then select RUN. In the Run dialogue box type in CMD, then at the command prompt type: **ipconfig/all**

```
C:\WINNT\System32\cmd.exe

Windows NT IP Configuration

Host Name . . . . . : hbctc1.autocue.co.uk
DNS Servers . . . . . : 10.129.0.1
                       10.129.0.2
                       10.129.0.50
Node Type . . . . . : Hybrid
NetBIOS Scope ID. . . . . :
IP Routing Enabled. . . . . : Yes
WINS Proxy Enabled. . . . . : No
NetBIOS Resolution Uses DNS : No

Ethernet adapter E190x1:

Description . . . . . : 3Com 3C90x Ethernet Adapter
Physical Address. . . . . : 00-10-4B-4C-87-9E
DHCP Enabled. . . . . : Yes
IP Address. . . . . : 0.0.0.0
Subnet Mask . . . . . : 0.0.0.0
Default Gateway . . . . . :
DHCP Server . . . . . : 10.129.0.2
```

Take note of the details displayed and give them to your ENPS I.T. Support department so they can have the WinCue machine registered on the ENPS network.

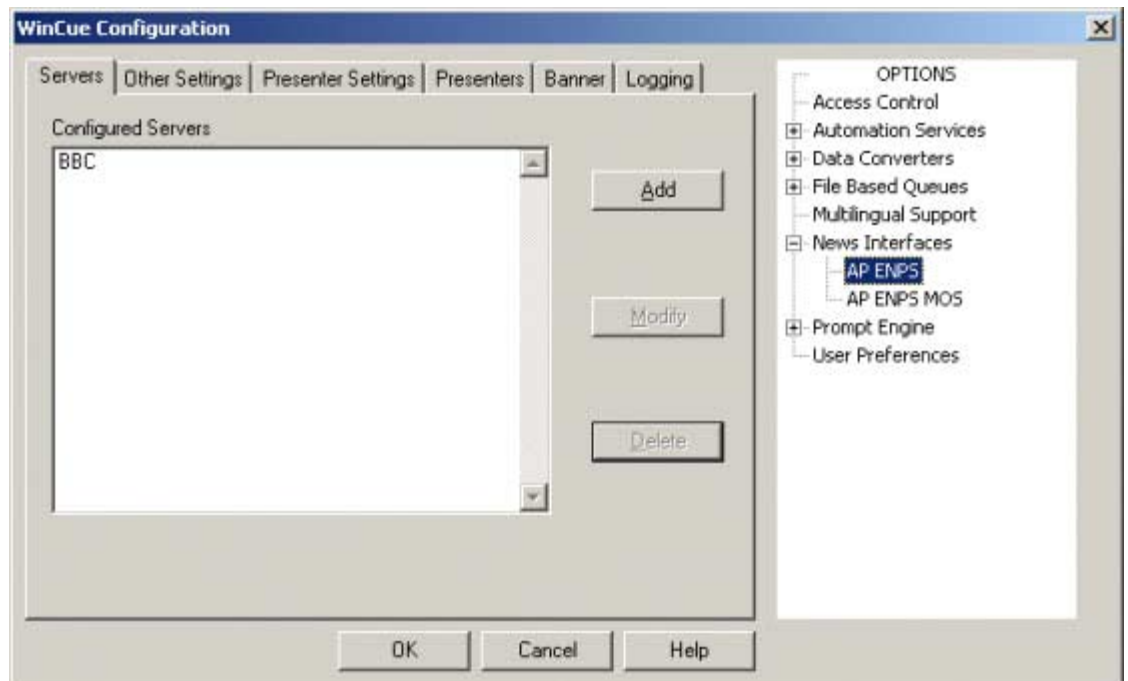


# 2 Configuration

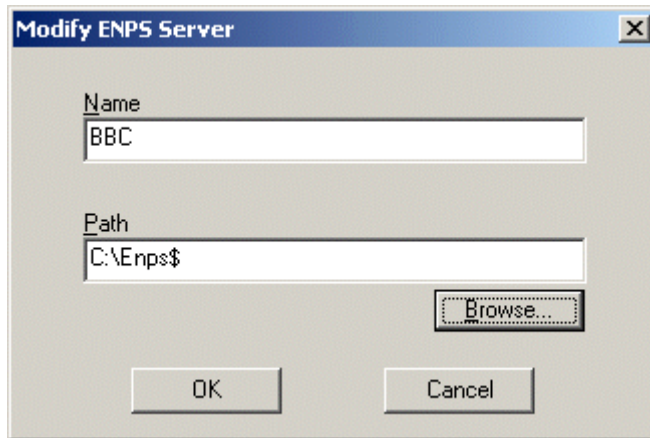
---

## 2.1 WinCue Configuration

While in WinCue, click on the Tools menu and select Options, a WinCue Configuration window will open from here click on the News Interfaces option and then on the AP ENPS option. The settings for the AP ENPS interface will appear opposite; it is from here that you configure how WinCue and ENPS communicate.



Click on the Add button and an Modify ENPS Server box will appear, give the Server a name (this is A reference name, **NOT** the name of an actual physical server) and then enter, or browse for, the details of the ENPS folder path on your WinCue machine (this is the fully qualified network path for the directory that ENPS terminals can 'Dump' to) in the Path box.



Once all this server information has been entered, left-click on the OK button, the server name will now be listed under Configured Servers.

Now click on the Other Settings tab, then click on the Font button, a font selection dialog will now be displayed, this is the font to be used for prompting, a font size of between 80 and 100 is advisable.

Depending on the way that you want WinCue to work with ENPS, select the behavior you are going to allow, such as whether you want to 'Allow On-Air Item Deletes'. The default options are recommended.

When you are happy with your AP ENPS settings, click on the OK button, this will save your settings.

## 2.1.1 Further Settings

This section will explain the rest of the options available when configuring AP ENPS in Tools | Options.

### 2.1.1.1 Other Settings

**Script Font** – The font size and style that is set here will be used for all scripts that are received by WinCue via the ENPS news system.

**Trashcan Control** – Scripts that have been removed from the Runorder are placed in the WinCue trashcan. This sets the size of your trashcan and also sets whether replaced items are kept.

**Allow On Air Editing** – WinCue can edit sent items. If this is not ticked then sent items can only be edited in panic mode.

**Allow On Air Delete** – Deleted items on ENPS will be deleted from WinCue.

**Allow On Air Updates** – Updated items on ENPS will be updated on WinCue.

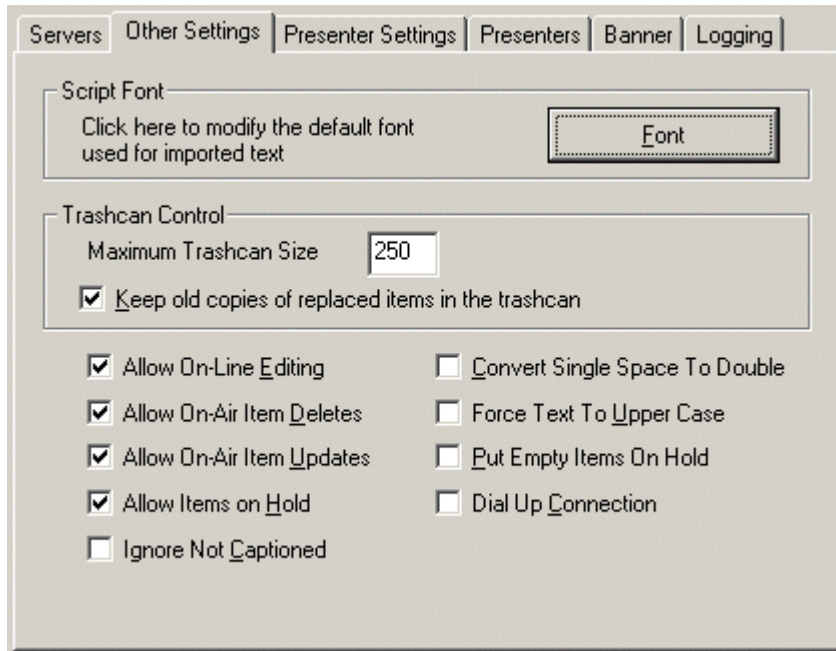
**Allow Items On Hold** – Allows the ENPS system to put an item on hold.

**Ignore Not Captioned** – Text marked as not captioned will not be displayed on the prompter.

**Convert Single Spaces To Double** – Single spaces in the script will be converted to double spaces.

**Force Text To Upper Case** – Changes all received text to upper case.

**Put Empty Items On Hold** – All empty items (no text) are put on hold (Highlighted in blue).



### **2.1.1.2** ***Presenter Settings***

This menu option is covered in the WinCue Pro News manual; the only difference is that these settings only apply when you are receiving scripts using the ENPS interface.

### **2.1.1.3** ***Presenters***

This option is covered in the WinCue Pro News manual; the only difference is that these settings only apply when you are receiving scripts using the ENPS interface.

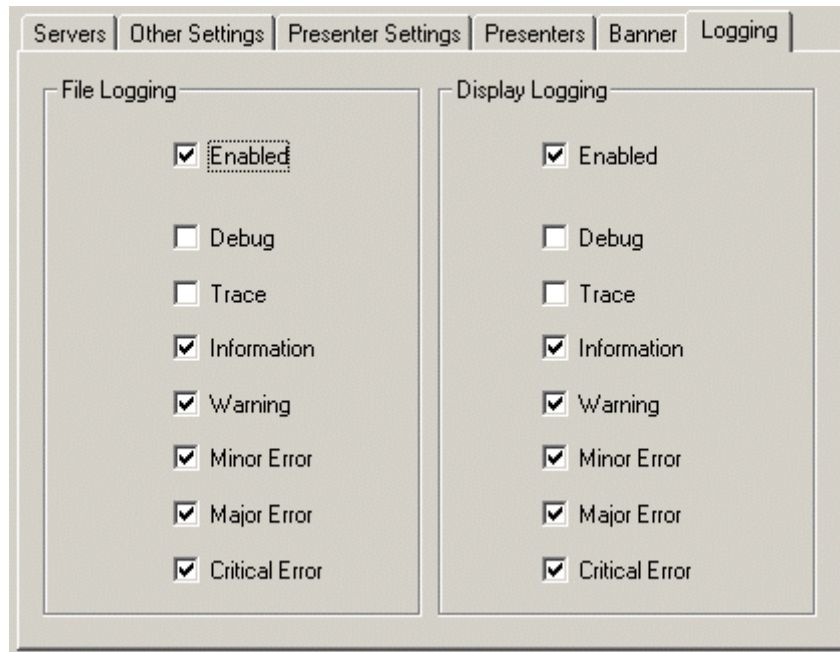
### **2.1.1.4** ***Banner***

This menu option is covered in the WinCue Pro News manual; the only difference is that these settings only apply when you are receiving scripts using the ENPS interface.

### **2.1.1.5** ***Logging***

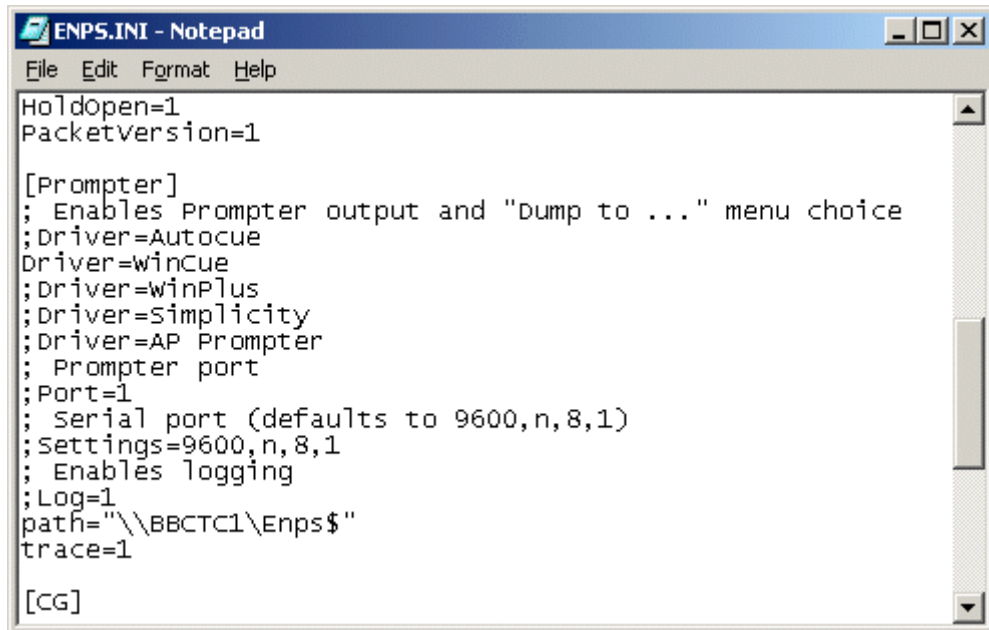
If you are experiencing any problems while you are using the WinCue prompter then you can create an error log containing details of what is happening with

certain processes. The list of options can be checked and a log file will be created, with each option checked, in the Wincue\Logs folder.



## 2.2 AP ENPS Configuration

On your ENPS machine, find and open the enps.ini file, it will look something like this:



```
ENPS.INI - Notepad
File Edit Format Help
Holdopen=1
PacketVersion=1

[Prompter]
; Enables Prompter output and "Dump to ..." menu choice
; Driver=Autocue
Driver=winCue
; Driver=winPlus
; Driver=simplicity
; Driver=AP Prompter
; Prompter port
; Port=1
; Serial port (defaults to 9600,n,8,1)
; Settings=9600,n,8,1
; Enables logging
; Log=1
path="\\BBCTC1\Enps$"
trace=1

[CG]
```

Once opened, scroll down to the section that contains the [Prompter] settings, then modify the path line to include the fully qualified network path of the shared folder on your WinCue machine. Save the file and now when ENPS is started you will have a Dump to WinCue menu option, use this option to select and send the ENPS Runorders that you wish to use in WinCue.

## 3 AP ENPS Scripts in WinCue

---



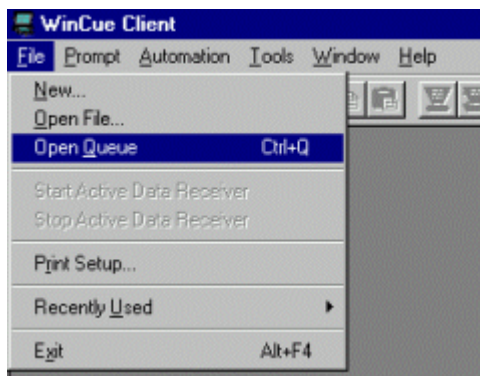
## 3.1 Opening AP ENPS scripts

Once you have connected the WinCue machine to the ENPS machine, as discussed in the previous sections, you will be able to open Runorders and scripts from the ENPS newsroom system. This section will explain how to open these ENPS scripts in WinCue.

In WinCue click on the red folder button on the toolbar: 

Or

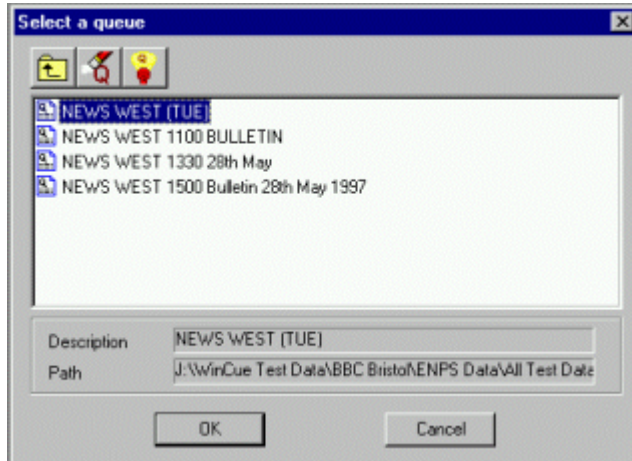
Left-click on the File menu and then select Open Queue from the drop-down menu.



The 'Runorder/Queue Browser' will then be displayed. You can then edit and prompt the scripts within the Runorder as described in the WinCue Pro News manual provided with your WinCue Pro News package.

### 3.1.1 The Queue Browser

All the available Runorders that have been dumped from the ENPS terminal are listed in his box.



If the Runorder that you wish to load (for prompting) is not listed in this box ensure that the Runorder has been dumped from the ENPS machine.

To open an ENPS Runorder on WinCuePro ready for prompting, do either of the following:

Double left-click on the Runorder that you want to open.

Or

Left-click (select) the Runorder you want to open and then click on the 'OK' button.

The Runorder will then be opened and be set ready to start prompting.

### 3.1.2 **Deleting an old ENPS Runorder from WinCuePro**

After a number of ENPS Runorders have been 'dumped' to WinCuePro, the 'Runorder/Queue Browser' will become cluttered with old Runorders. These Runorders are deleted using the 'Runorder/Queue Browser'.

It is the WinCuePro operator's responsibility to delete old ENPS Runorders from the WinCuePro computer.

---

**Note: Deleting old ENPS Runorders from the WinCuePro computer does not in anyway affect ENPS; it purely deletes files off of the actual WinCuePro computer.**

---

Ensure that the ENPS machine is not currently 'dumping' to the ENPS Runorder that you want to delete, i.e. the Runorder on the ENPS terminal must be closed or the 'Dump to WinCuePro' for the Runorder is not enabled.

Close all open Runorders on WinCue so that the Queue Browser is displayed.

Click on the Runorder that you want to delete and then click on the delete Runorder icon:



You will then be requested to confirm that you are sure you want to delete the selected ENPS Runorder and then the ENPS Runorder will then be deleted from the WinCue machine.

## 3.2 Panic Mode

WinCuePro has a Panic Mode option that allows ENPS Runorders and stories to be manipulated from WinCuePro if the ENPS system stops working for any reason such as a network failure.

---

**IMPORTANT: The 'Panic Mode' feature should only be used as a last resort.**

---

If Panic Mode is enabled the WinCue machine will stop trying to receive updates from ENPS, as soon as Panic Mode is disabled the WinCue machine will re-start trying to receive updates from ENPS.

---

**Note: Any changes to the Runorder and stories on WinCuePro while in 'Panic Mode' will be lost as soon as 'Panic Mode' is disabled**

---

### 3.2.1 Enabling/Disabling Panic Mode

Click on the Panic Mode icon on the tool bar at the top of the screen to toggle Panic Mode. When the button is shown as pressed in Panic Mode is enabled, otherwise it is disabled:

Panic Mode disabled: 

Panic Mode enabled: 

While in Panic Mode:

The Runorder can be changed on WinCue in the same way that it is changed on ENPS (i.e. Dragging and dropping stories with the mouse).

To Delete/drop a story, left-click (select) the story and then press the Delete key, the story will then be moved to the Trash Can at the bottom of the screen (stories can be dragged back out of the Trash Can).

To Insert a New story, right-click below the placement for the new story.

A drop-down menu will then appear, select New, then Single-column Script.

You will be asked for the name/title of the new story, type it in and select the OK button.

Double-click on a story to view it and edit it. The editor works in the similar way as the ENPS editor, but stories do not have to be saved.

## 3.3 Trouble Shooting

This section deals with the various messages and errors that you may come across while using WinCue with AP ENPS.

**Updated** - The story has been updated by ENPS.

The following four messages will appear in **red** status boxes, as they are generally error messages.

**MISSING** - The story file has not been received from the ENPS terminal.

*Likely cause:* The story may not contain any text on the ENPS terminal.

**IMPORT FAILED** - The story file has been sent but it has not been possible for WinCuePro to import the text.

*Likely cause:* The file may have been corrupted in some way.

*Possible solution:* Re-dump the ENPS Runorder.

**OUT OF DATE - MISSING** - The story file has already been sent by ENPS and read by WinCuePro, but has since been removed/deleted.

*Likely cause:* The ENPS Runorder has been re-dumped or more than one ENPS terminal is dumping to WinCuePro simultaneously. If either one of these cases is true then this message can be ignored.

**DATA OUT OF DATA** - The story file has already been sent by ENPS and read by WinCuePro, but has not been updated as expected.

*Likely cause:* The ENPS Runorder has been re-dumped or more than one ENPS terminal is dumping to WinCuePro simultaneously. If either one of these cases is true then this message can be ignored.

# 4 Technical Support

---

## 4.1 Technical Support

Technical Support is of prime importance to the management of Autocue, we therefore provide a 24-hour help line service to assist and advise.

For more technical help or advice please call our 24-Hour Technical Support Help Line:

**+44 (0) 20-88700104**

Or email us at

**[info@autocue.co.uk](mailto:info@autocue.co.uk)**