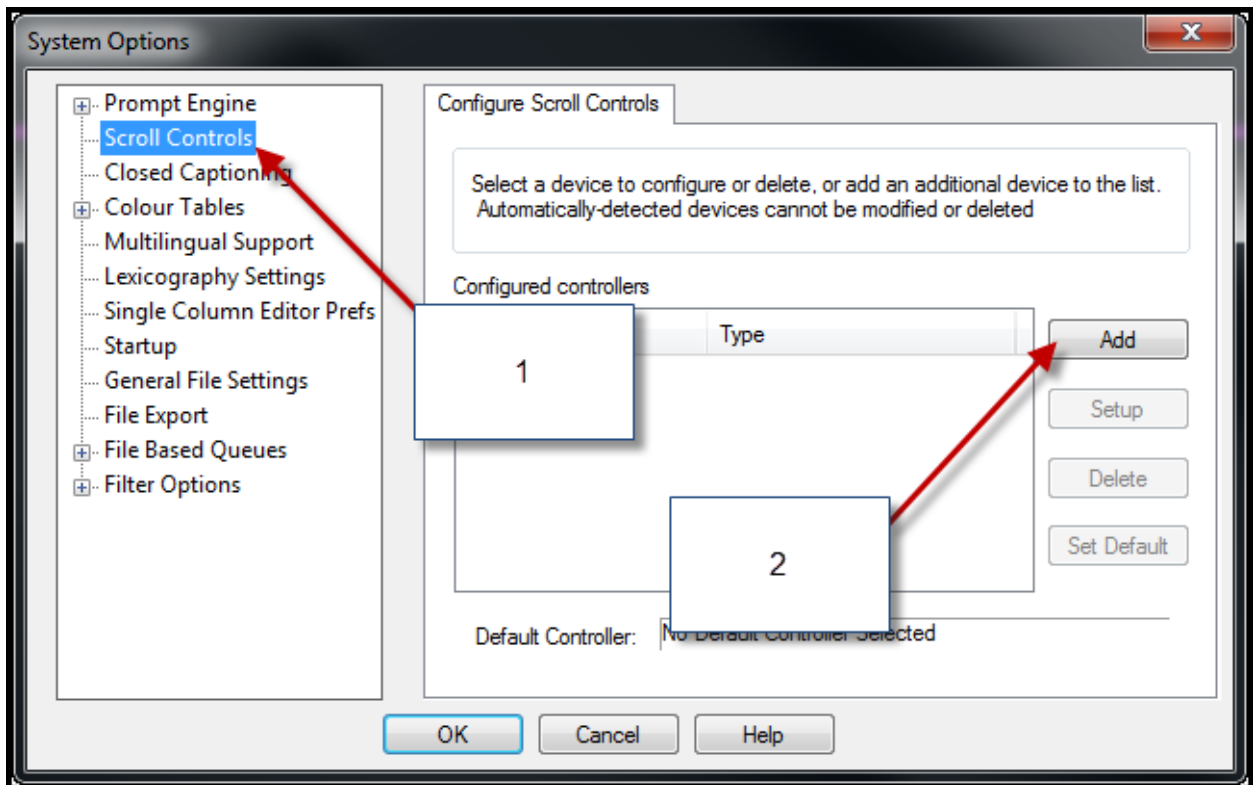


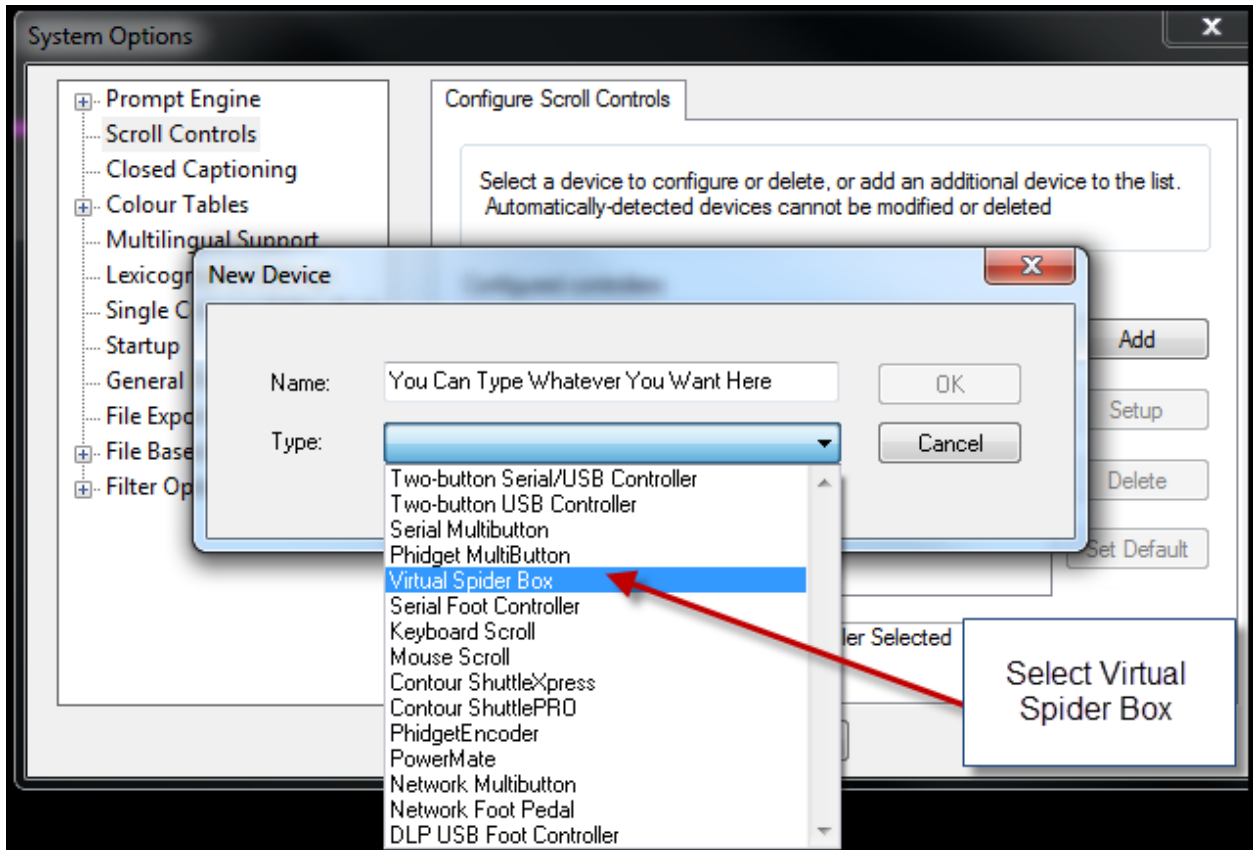
QPro

Setting Up Multiple Controllers Using the Virtual Spiderbox

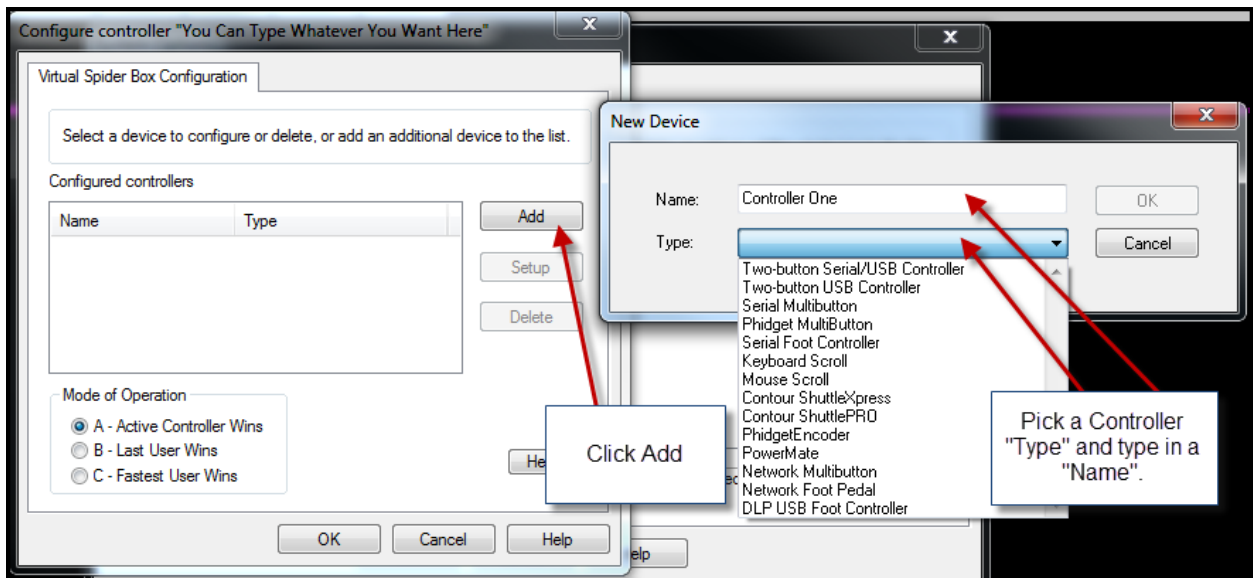
- **Launch QPro**
- **Go to “Tools”, then “Options”**
- **Click for “Scroll Controls”**
- **Click “Add”**



- **Type in a name for the controller setup (it is completely arbitrary) but make sure from the drop-down you select “Virtual Spider Box”**



- **Press "OK"**



- **Click "Add"**
- **Type in a name for the controller you are configuring but make ensure from the drop-down you select the correct type.**

- **Follow prompts and configure the buttons and the serial port the controller is connected to, along with any other settings customizations as desired.**
- **If you are using a Serial Extender (e.g. over Ethernet) then consult the documentation for the extender to determine which serial COMM ports the extender has assigned. For most extenders it is not recommended that the Ethernet cable be run only in a straight connection (i.e. no switches, etc.).**
- **The rate table determines how quickly the scroll controller accelerates. If you are seeing a drifting of a controller try putting 0's in for the first several values on the table.**
 - ❖ *The scroll type authorities are explained as below:*
 - *Active user wins: whoever's scrolling now remains in control*
 - *Last user wins: whoever tries to scroll is in control regardless of whether someone else is scrolling or not.*
 - *Fastest user wins: whoever's scrolling fastest wins. Not recommended except for testing purposes*
- **After you have added all controllers click "OK" to close options and begin prompting. If the controllers do not immediately work it is recommended that you restart QPro to apply changes.**