

MOS Integration Guide

SECTION 1: Configure QMaster for MOS Integration

1.1: Configure the Autocue prompting client

The Autocue prompting computer must be setup for receiving data from your MOS server.

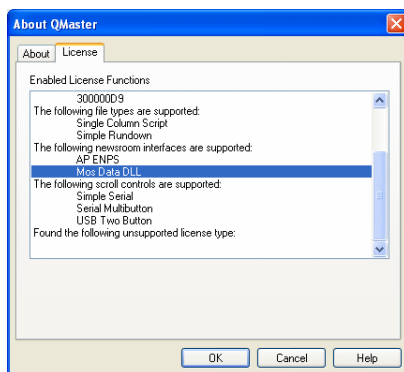
1.1.1: Check integration is licensed

After completing the installation of QMaster, ensure that the MOS interface has been correctly licenced.

1. From the main menu bar, select Help >> About and then click the License tab.



2. Scroll down the entries to check that the MOS Data DLL has been installed.

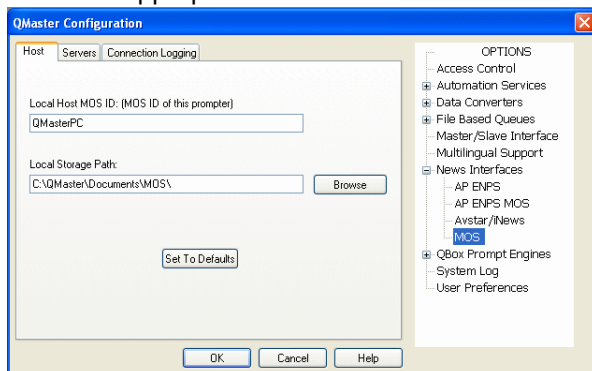


1.1.2: Create or modify an MOS server connection

Use the following steps to configure how QMaster and an MOS server communicate.

1. From the main menu bar, select Tools >> Options... >> News Interfaces.
2. Scroll down and select the MOS entry.

3. Enter the appropriate information in the fields on the various tabs.



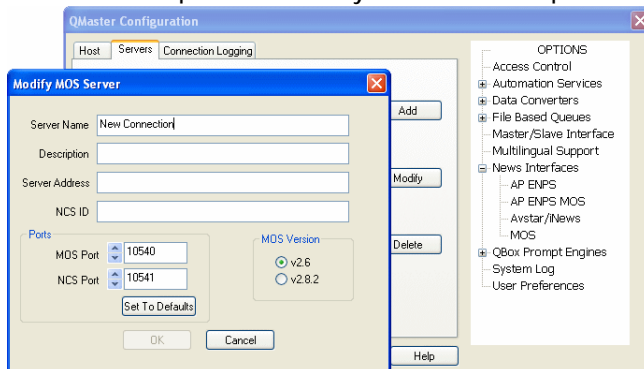
The Local Host Ident: field is the name or IP address of the Autocue prompting computer.

The interface with the newsroom automation system is a dynamic one where changes to the scripts and runorder on the ENPS server are continually sent to the prompting computer and reflected in the runorder displayed in QMaster.

QMaster also stores a copy of the script data in a folder on the local machine. The default location created when QMaster is installed is C:\QMaster\Documents\MOS. If required, you can enter an alternative location in the Storage Path field.

NOTE: You can restore the settings applied on installation by clicking Set to Defaults.

4. Click on the Server Names tab.
5. Click Add to open the Modify MOS Server panel.



6. Fill in the requisite information in the appropriate fields.

The Server Name is the name or IP address of the newsroom server.

Description is a free text field in which you can enter information that is meaningful to your network, for example the room number in which the computer is located.

The NCS ID is the unique identifier of the computer on your network. This string is appended to all data from the newsroom server to identify which runorder and script the data relates to.

The MOS Port is the port number for where QMaster connects to the MOS newsroom server. The port number allocated by the MOS Standard is 10540.

The NCS Port is the port for where the newsroom server connects to QMaster. The port number allocated by the MOS Standard is 10541.

You can restore the standard values at any time by clicking Set to Defaults.

Select the version of MOS that you are using from those shown in the MOS Version panel.

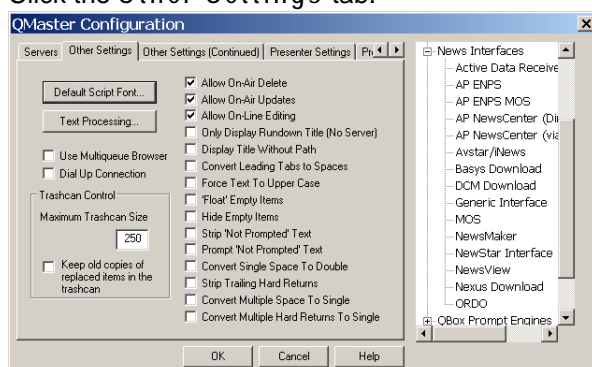
Amend connections. At any time, if you need to change an existing connection, select Tools >> Options... >> News Interfaces to open the list of MOS servers. Select the required server and click Modify to access the required fields.

1.1.3: Configure QMaster to MOS connection

After you have created a connection to an MOS server, you will need to configure how QMaster processes the information from it.

The following procedure outlines configuring the connection.

1. Click the Other Settings tab.



2. Make the required selections from the list of parameters shown.

Default Script Font: Click on this button and select the font you wish to be used in all your downloaded MOS scripts.

NOTE: A font size between 80 and 100 is recommended.

Maximum Trashcan Size: Specify the maximum number of items that can be stored in the QMaster trashcan (the default is 250).

Keep old copies of replaced items in trashcan: By selecting this option, old copies of updated items will be kept in the trashcan.

Convert a Tab: Enter a value to specify the number of spaces used when hitting the Tab key.

Convert String to Marker: By entering a word or character in this box, any occurrences of this word or character within the imported text will be converted into a marker. The following three parameters allow for alterations made to a rundown or script on the MOS server to be automatically reflected in the QMaster prompt output:

Allow On Air Delete: Items deleted from a rundown on an MOS server will be automatically deleted from the QMaster rundown.

Allow On Air Updates: Updated items on MOS will be updated on QMaster.

Allow On Air Editing: QMaster can edit sent items. If this is not ticked then sent items can only be edited in panic mode.

Only Display Rundown Title: If this option is selected QMaster will display the queue path as the rundown title; otherwise it will display the MOS queue path.

Convert Single Spaces To Double: Single spaces in a script will be converted to two spaces.

Dial Up Connection: This will change the update checking time.

Force Text To Upper Case: Changes all received text to upper case.

'Float' Empty Items: If this option is selected, any empty items (without script) received will automatically be put on hold.

Strip 'Not Prompted' Text: If this option is selected then text that has been marked,

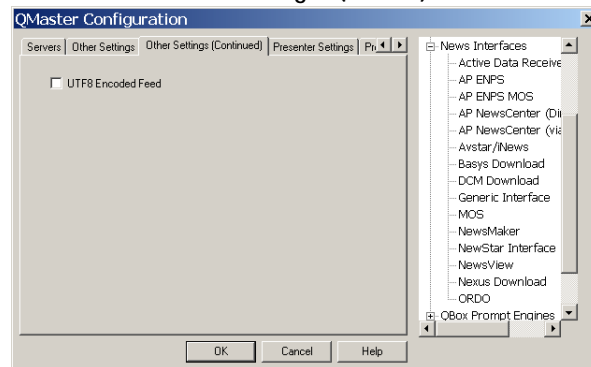
as Not Prompted will be removed from the downloaded rundown.

Prompt 'Not Prompted' Text: If this option is selected then text marked Not Prompted will be prompted.

Convert Single Space to Double: If this option is selected then single spaces within scripts will be converted to double spaces.

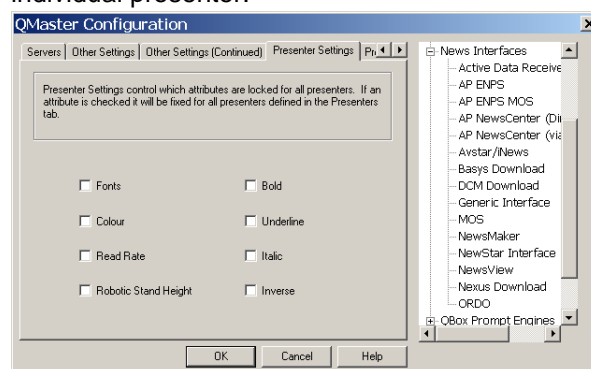
Strip Trailing Hard Returns: This option will remove any extra hard returns at the end of a script.

3. Click the Other Settings (cont.) tab.



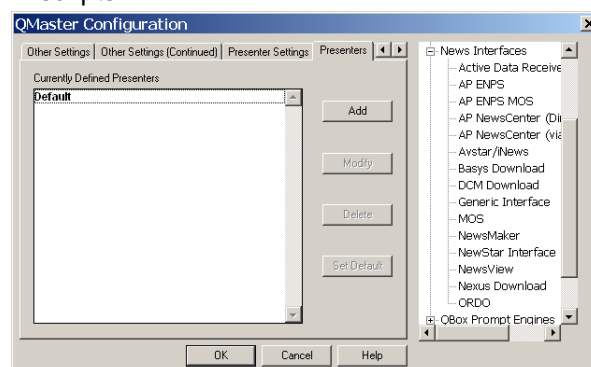
4. If the feed from the MOS server contains Unicode characters that need to be correctly interpreted, select the UTF8 Encoded Feed checkbox.

5. Click the Presenter Settings tab to specify which parameters may be set for an individual presenter.



NOTE: Parameters that are not checked are fixed for all presenters.

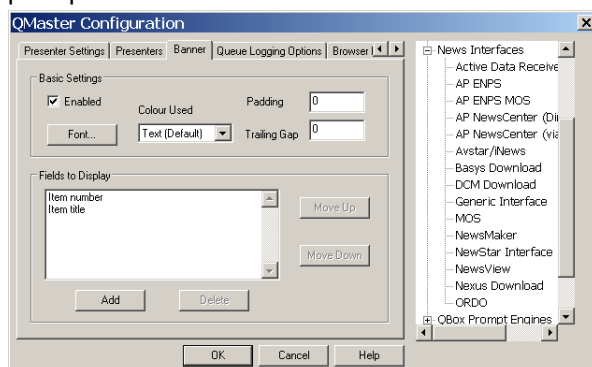
6. Click the Presenters tab to display a list of presenters currently available for inclusion in scripts.



7. For details about creating and modifying Presenters, refer to the QMaster User Guide, section 7.5: Presenters.

Presenter profiles created via the MOS interface are automatically added to the runorders and scripts downloaded from the MOS server.

8. Click the **Banner** tab to change the parameters defining the appearance of the prompter banner.



9. Select **Enabled** if you want information to be included at the beginning of each item in a prompted script.

Enter a value in the **Padding** field to increase the thickness of the banner.

The values in the **Trailing Gap** field increases the distance between the banner and the first line text in the script.

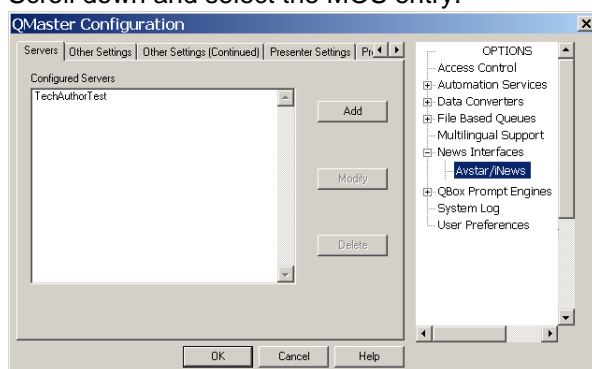
The **Fields to Display** panel lists the fields from the runorder layout that are included in the banner. **Item number** and **Item title** are included as default. Select an entry in the list and click the **Move Up** or **Move Down** button to change the order in which they are displayed. Click **Add** to display a list of fields available for inclusion in the banner.

1.1.4: Troubleshoot MOS interface performance

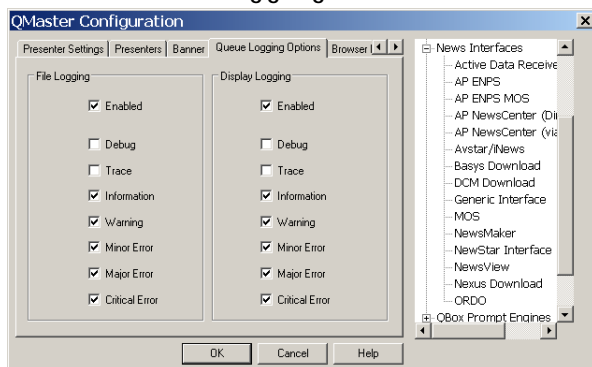
If you encounter difficulties at any stage when downloading MOS scripts and runorders, you can set up a log of QMaster actions and performance which can be used by the Autocue Technical Support team to establish the cause.

Queue logging.

1. From the QMaster main menu bar, select **Tools >> Options... >> News Interfaces**.
2. Scroll down and select the **MOS** entry.



- Click the Queue Logging tab to select information to be included in the log.

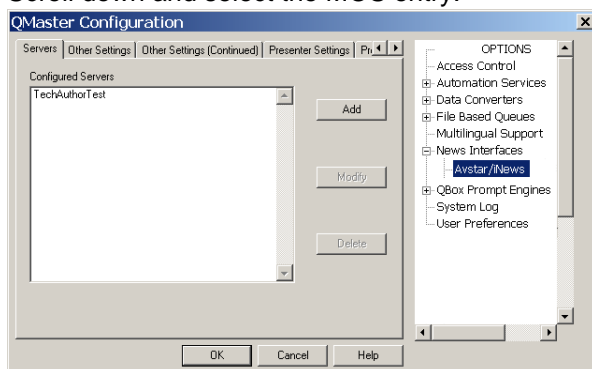


- Select the appropriate Enabled checkbox depending on whether you want the information saved to a file or displayed on screen or both.

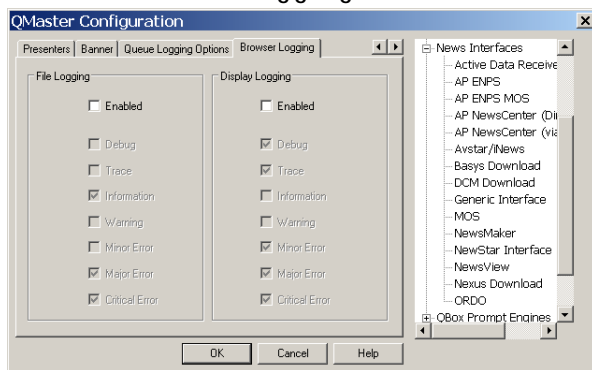
Browser logging.

If you are using the new FTP interface to an MOS server, you can also set up logging of behaviour and performance of the browser while it is searching MOS runorders and scripts.

- From the QMaster main menu bar, select Tools >> Options... >> News Interfaces.
- Scroll down and select the MOS entry.



- Click the Browser Logging tab to select information to be included in the log.



- Select the appropriate Enabled checkbox depending on whether you want the information saved to a file or displayed on screen or both.